

****How to Remove the Battery from the Videojet 3340 Laser Marking Machine (Older Version)****

****Introduction****

Safely removing the battery from the Videojet 3340 laser marking machine (older version) is a critical step for maintenance or replacement. This guide provides a detailed walkthrough of the battery removal process, ensuring both beginners and experienced operators can perform the task safely and efficiently. Follow this tutorial to correctly remove the battery from the Videojet 3340 to ensure equipment safety and maintenance efficiency.

****Battery Removal Guide****

****Preparing for Battery Removal****

Before removing the battery, ensure the equipment is safe and properly shut down.

- Turn off the Videojet 3340 laser marking machine's power switch, ensuring the device is completely powered off.
- Disconnect the machine from the main power supply to avoid any risk of electric shock.
- Wear appropriate protective gear (e.g., insulated gloves) and ensure a safe working environment.

****Locating the Battery Compartment****

Find the battery compartment in the Videojet 3340 laser marking machine.

- Refer to the equipment manual to confirm the battery compartment's location, typically on the back or bottom panel.
- Use appropriate tools (e.g., a screwdriver) to open the battery compartment cover, taking care not to damage screws or panels.
- Inspect the battery compartment to confirm the battery's position and securing mechanism.

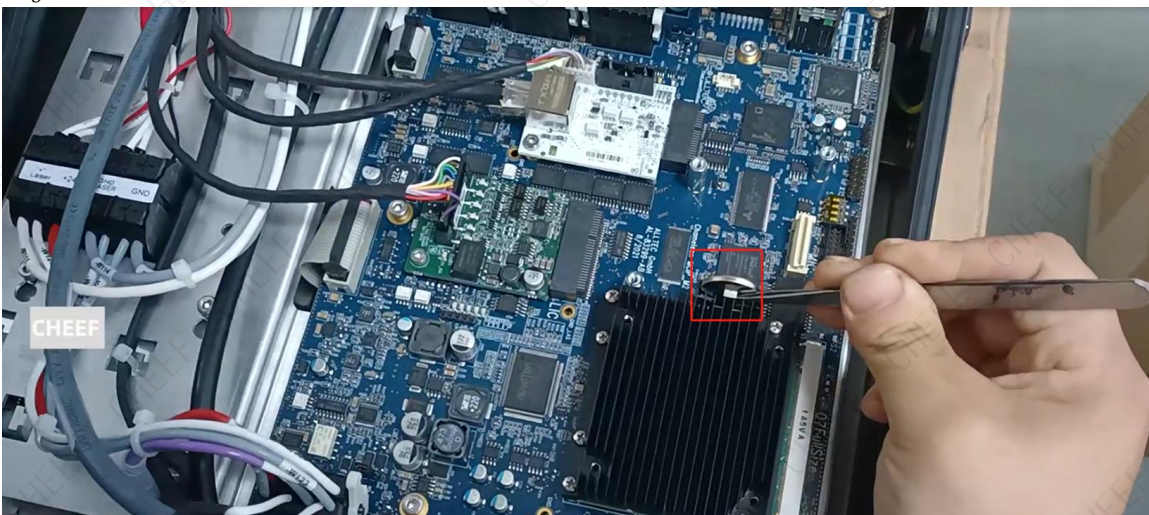
Suzhou Cheef Technology CO.,LTD



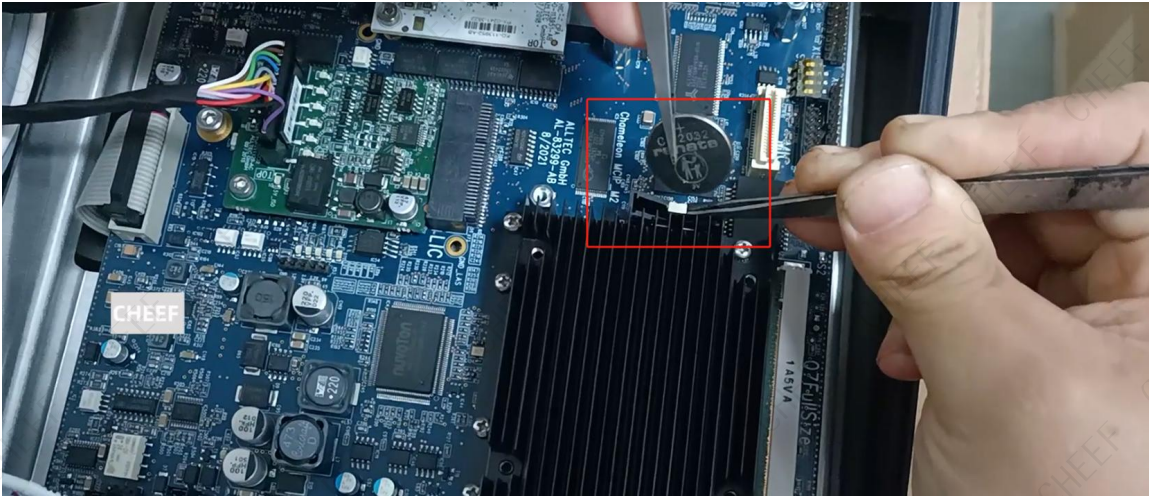
Removing the Battery

Safely disconnect and remove the battery.

- Check the battery's connection wires, ensuring you identify the positive and negative terminals (usually marked "+" and "-").
- Carefully disconnect the battery wires, avoiding pulling or causing a short circuit.
- Gently release any clips or brackets securing the battery (if applicable), then slowly remove the battery.
- Place the battery on a safe, non-conductive surface, avoiding contact with metal objects.



Suzhou Cheef Technology CO.,LTD



Post-Removal Steps

Properly handle the removed battery and prepare for replacement or disposal.

- Inspect the battery for damage or leaks; if abnormalities are found, handle according to local regulations.
- If replacing the battery, ensure the new battery matches the original model.
- Clean the battery compartment to ensure no dust or debris affects the new battery installation.
- Store or dispose of the old battery properly, following environmental regulations.



Safety Precautions

- Always operate with the power off to avoid electric shock or equipment damage.
- Do not forcefully pull battery connection wires to prevent damage or short circuits.
- Use insulated tools and wear protective gloves to ensure safety.
- If unsure about any step, consult a professional technician.



Suzhou Cheef Technology CO.,LTD

****Contact Us****

For further assistance or technical support, contact Cheef Company:

- ****Email****: sales@cheef.cn
- ****WhatsApp****: +86 181 6857 5767

We are committed to providing professional support to keep your Videojet 3340 laser marking machine running smoothly!

****Video Reference****

For a visual guide, watch the battery removal process here:
[https://youtu.be/ALY5_GA-f04\[\]](https://youtu.be/ALY5_GA-f04[]) (<https://www.youtube.com/?gl=US/>)



Email:sales@cheef.cn Whatsapp:+86 181 6857 5767